



**AdleRac<sup>®</sup>**

**RacSense<sup>®</sup>  
Variable Speed Fan  
Controller (FC-3-2)**

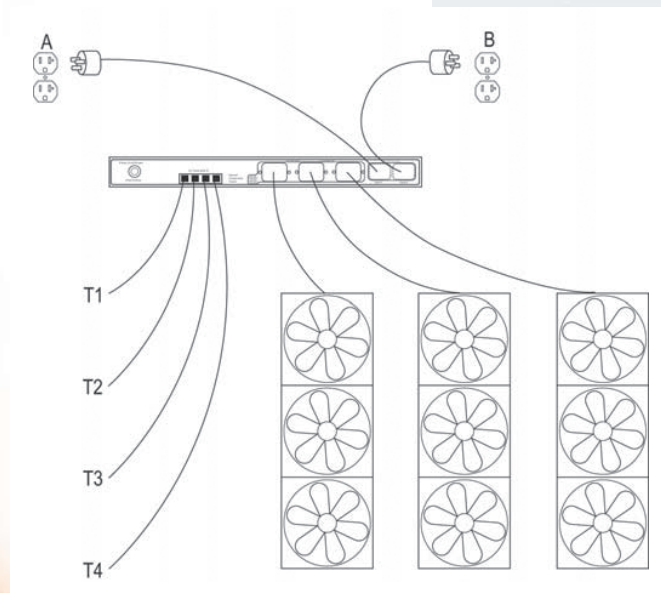
# RacSense® Variable Speed Fan Controller (FC-3-2)

Maintain optimal cabinet temperature while reducing fan noise, extending fan life and conserving energy. The Geist Variable Speed Fan Controller takes real-time temperature measurements and automatically adjusts the fan speed accordingly to protect your equipment.



## Specification:

- Automated maintenance of optimal cabinet temperature
- Web accessible remote monitoring and maintenance
- Dual A/C input - auto switching in the event of a power failure
- Instant notification alarms via SNMP trap, e-mail and/or audible buzzer
- Compatible with Shaded Pole and Split Capacitor AC fans
- Recessed 1U horizontal mounting with attached brackets
- Conserve Energy
- Reduce fan noise
- UL® & c-UL® Listed 60950
- Cords not included
- Chassis dimensions 1.72"H x 17.1"W x 3.52"D



Fan speed automatically adjusts based on highest temperature measured.

# RacSense® Variable Speed Fan Controller (FC-3-2)

## Local Input

- 90V to 264V (auto sensing)
- Dual A/C input - two IEC C14
  - auto switching in event of power failure
  - 90-264 Volt auto sensing
- RJ-45 ethernet connection
  - access via web browser
  - direct connection available via crossover cable
- 4 RJ12 jacks for remote temperature sensor connection
- Fan speed manual/local override via rotary switch
  - unplug ethernet connection
  - set point change button must be pressed while activating rotary switch
  - rotary switch with recessed screwdriver slot
  - manual temperature set-points of 65°- 100°F
  - manual full on setting for 100% fan speed

## Local Output

- 3 IEC C13 outlets for fan connection, 267 watts per outlet
- Fan speed control of 30-100%
- Scrolling digital display of real-time measurements
  - set point temperature
  - internal temperature
  - four external temperature sensors
  - fan speed percentage
- Audible alarm with silence reset button
- Fan running visual indicator LED's
  - speed - running at a level less than Full On - orange LED
  - fan manually off - orange LED
  - remote control - orange LED
  - fan Full On - orange LED
  - over temp - red LED

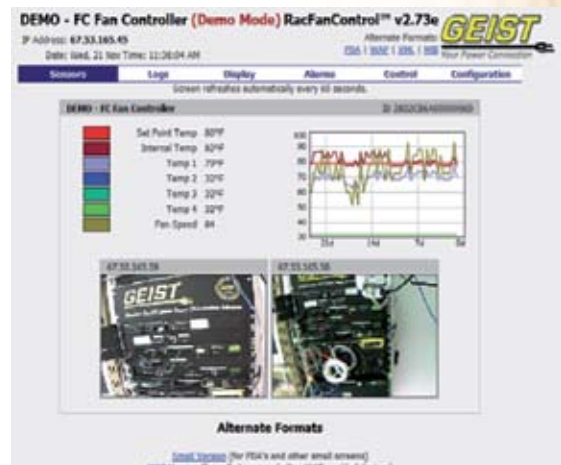
## Remote Input

### Three Levels of Password Protection

- Temperature set-points of 65°- 100°F
- Optional Full On setting for 100% fan speed
- Friendly device and sensor names
- Celsius or Fahrenheit selection
- Low and high trip level selection
- Alarm notification selection (SNMP trap, e-mail and/or audible buzzer)

## Remote Output

- Real-time measurements and graph
  - internal temperature
  - four external temperatures
  - fan speed
  - set-point temperature
- Log data available for export via XML or real-time via SNMP
- Event log with variable content settings
- Visual image display from optional IP addressable camera
- Alarms via SNMP trap or e-mail



---

**Head Office, Johannesburg:**

51-57 Gibbs Road  
Devland 1813  
Johannesburg  
Tel (S-board): +27 (0) 11 983 7000  
Fax : +27 (0) 11 938 9895

**Bloemfontein**

3 Walter Raath Street  
Ooseinde 9301  
PO Box 2164  
Bloemfontein 9300  
Tel +27 (0) 51 432 4063  
Fax: +27 (0) 51 432 4661

**Cape Town**

Falcon House  
19 Woodlands Road  
Woodstock 7925  
PO Box 99  
Woodstock 7915  
Tel: +27 (0) 21 486 8700  
Fax: +27 (0) 21 448 2485

**Durban**

705-707 Chris Hani Road (North Coast  
Road)  
Redhill 4051  
PO Box 201398  
Durban North 4016  
Tel: +27 (0) 31 581 6300  
Fax: +27 (0) 31 563 2321

**Port Elizabeth**

42 Sidwell Avenue  
Sidwell 6001  
PO Box 400  
Port Elizabeth 6000  
Tel: +27 (0) 41 453 2424  
Fax: +27 (0) 41 453 3555

E-mail: [info@adlerac.co.za](mailto:info@adlerac.co.za)



# AdleRac®

[www.adlerac.co.za](http://www.adlerac.co.za)