

# SYSTIMAX® SOLUTIONS

## SYSTIMAX® 1100PSCAT5E Panel

### SYSTIMAX® SCS Component

The 1100PSCAT5E Modular Jack Panel is a 19-inch rack mountable RJ45 jack panel. The 1100PSCAT5E accommodates repeated line moves, additions and rearrangements. The IDC connection on the rear of the panel houses the printed wiring board that provides continuous connection to the 8-pin modular jacks on the front. The result is a hard-working panel that allows an IDC gas-tight termination of equipment on 110 connectors. The panel is available with 24 or 48 RJ45 ports. The 1100PSCAT5E Panel kit includes new icon labels with plastic holders that you can mount on the front of the panel for easy port identification. For additional labeling support you can use SYSTIMAX Identifier.

The 1100PSCAT5E has an enclosed Printed Wiring Board (PWB). Cable tie slots on each end of each 6-port module allow for the use of cable ties (provided to secure the cable at the edge of the module). The panel is capable of handling either T568A or T568B wiring; you simply select the appropriate label and wire the product as either A or B depending on your customer requirements.

The 1100PSCAT5E Panels meet or exceed the Category 5 and Category 5e requirements in ISO/IEC 11801 (2002), EN50173-1 (2002) and EIA/TIA-569B.

© 2004 CommScope, Inc.  
All rights reserved.

Visit our Web site at [www.systemax.com](http://www.systemax.com) or contact your local SYSTIMAX Solutions representative or SYSTIMAX BusinessPartner for more information. SYSTIMAX Solutions is a trademark of CommScope. All trademarks identified by ® or ™ are registered trademarks or trademarks, respectively, of CommScope.

This document is for planning purposes only and is not intended to modify or supplement any specifications or warranties relating to SYSTIMAX Solutions products or services.

03/04 PR-B-14

### Physical Specifications

**Insertion Life:** 570 cycles min.

**Plug/Jack Contact Force:** 100g min.

**Plug Retention Force:** 133 N min.

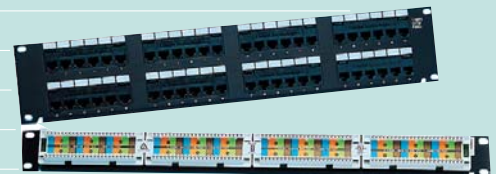
**Operating Temperature Range:** 0 to 60 C

**Storage Temperature Range:** -40 to 66 C

**Humidity:** 5 to 95% (noncondensing)

**Height: 24-Ports:** 4.38 cm (1 u); **40-Ports:** 8.83 cm (2 u)

**Width:** 48.26 cm (19 inch)



Product	Material ID	Ports	Packaging
1100PSCAT5E-24	108208919	24xRJ45	1/Pkg
1100PSCAT5E-48	108208935	48xRJ45	1/Pkg