

# SYSTIMAX®

---

## SOLUTIONS

## SYSTIMAX® 1100GS3 GigaSPEED® XL Patch Panel

**Designed by SYSTIMAX® Labs to provide reliable high-performance connectivity**

The SYSTIMAX® 1100GS3 GigaSPEED® XL panel is a high-quality patching system for terminating or interconnecting voice, data and video circuits to support high-bandwidth hungry applications. The 1100GS3 GigaSPEED XL patch panel is easy to install and maintain, and exceeds the performance and transmission standards required for mission-critical applications.

The 1100GS3 Modular Patch Panel is a 19-inch rack or wall mountable 8-pin modular jack panel that accommodates repeated line moves, adds and rearrangements. Installation is easy using proven 110 IDC gas tight terminations in the back with easy to read labeling guides.

The 1100D2-35 inter-bay organizer provides horizontal cord routing via metal distribution rings, and the 110D1-35 intra-bay organizer similarly provides horizontal cord routing with the addition of 24 small plastic clips for vertical pathway support. The 1100D3-35 intra-bay cord and cable organizer incorporates metal rings on the front for the horizontal routing and on the back for cable routing.



### Features and Benefits

- Electrical performance guaranteed to meet or exceed TIA/EIA 568-B.2-1 Category 6 and ISO/IEC Category 6/Class E specifications.
- Vertical and horizontal cord organizers available to improve patch cord management.
- Available in 24- and 48-port configurations featuring universal A/B labeling.
- 110 connector terminations on rear of panel allow quick and easy installation of 22 to 24 AWG cable.
- Attractive black powder covered high-strength steel panel comes equipped with a removable rear mounted cable management bar.
- Each panel comes ready to install, including front and rear labels.
- UL listed, UL-C certified and ACA approved.
- Can support network line speeds in excess of 1 gigabit per second.
- Backward compatible with Category 5e, 5 and 3 cords and cables. However, optimal performance is achieved when used with GS8E GigaSPEED XL Solution patch cords.
- Certified component of an integrated GigaSPEED XL Solution.
- Qualifies for a 20-year product and applications assurance warranty when included as part of a certified SYSTIMAX GigaSPEED XL channel.

**SYSTIMAX® Structured Connectivity Solutions**

The SYSTIMAX 1100AGS3 Panel is angled to allow the cable to flow to each side of the rack. This enables the patch cords to be routed directly into vertical cable managers. It also allows the labelling scheme and port identification to be visible at all times.

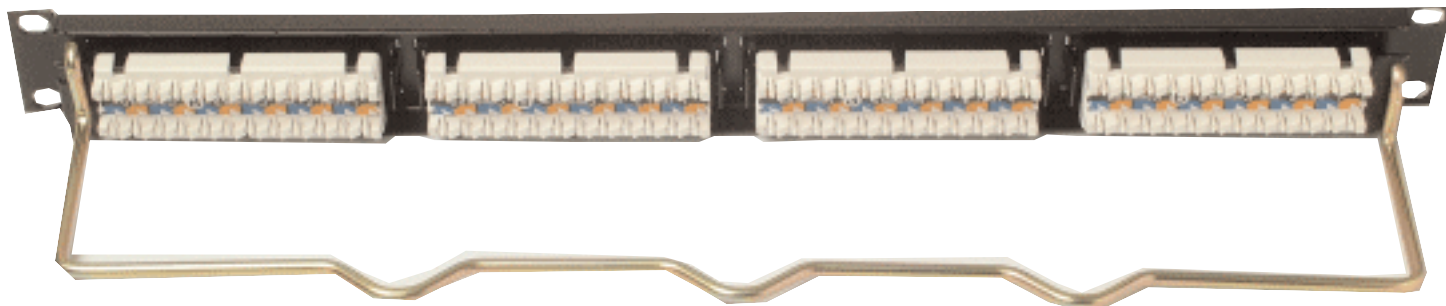


## Performance Specifications

	1100GS3 Patch Panel	XL7 Solution	XL8 Solution
	Typical Worst Pair Margin*	GigaSPEED Channel (4 Connectors)	
		Guaranteed Margin**	Guaranteed Margin**
Insertion Loss	64.3%	5.0%	7.5%
NEXT	6.6 dB	6.0 dB	7.0 dB
PSNEXT	7.3 dB	7.5 dB	8.5 dB
ELFEXT	6.4 dB	6.0 dB	8.0 dB
PSELFEXT	6.1 dB	8.0 dB	10.0 dB
Return Loss	6.6 dB	4.0 dB	4.0 dB
Frequency Range	1-250 MHz	1-250 MHz	1-250 MHz

\* Typical worst pair swept margin when measured with a GS8E modular patch cord.

\*\*Guaranteed margin is valid at any frequency from 1-250 MHz for a SYSTIMAX certified channel comprising GigaSPEED XL apparatus and 71E series cable (GigaSPEED XL7 Solution) or 81A series cable (GigaSPEED XL8 Solution). Values represent margin over the draft Category 6/Class E channel specifications.



Rear view of 1100GS3 Panel

### Physical Specifications

Dimensions	(Width x Height x Depth)
1100GS3-24:	19.0 x 1.75 x 1.60 in (48.26 x 4.44 x 4.06 cm) - Universal A/B labeling
1100GS3-48:	19.0 x 3.50 x 1.60 in (48.26 x 8.89 x 4.06 cm) - Universal A/B labeling
1100AGS3-24	19.0 x 1.75 x 4.10 in (48.26 x 8.44 x 10.41cm) - Angled Universal A/B labeling
1100AGS3-48	19.0 x 3.50 x 4.10 in (48.26 x 8.89 x 10.41cm) - Angled Universal A/B labeling
1100D1-35-19:	20.0 x 3.50 x 4.50 in (50.8 x 8.89 x 11.43 cm)
1100D2-35-19:	19.0 x 3.50 x 3.75 in (48.26 x 8.89 x 9.53 cm)
1100D3-35-19:	19.0 x 1.72 x 4.60 in (48.30 x 4.38 x 11.70 cm)
1100C1-35-19:	19.0 x 3.50 x 3.59 in (48.30 x 8.89 x 12.70 cm)
1100C1-70-19:	19.0 x 7.00 x 3.59 in (48.30 x 17.78 x 12.70 cm)

### Operational Specifications

Operating Temperature Range:	14°F to 140°F (-10°C to 60°C)
Storage Temperature Range:	-40°F to 158°F (-40°C to 70°C)
Humidity:	95% (noncondensing)
Nominal Solid Conductor Diameter:	0.025 to 0.020 in (0.64 to 0.51 mm) (22 to 24 AWG)
Nominal Stranded Conductor Diameter:	0.025 to 0.020 in (0.64 to 0.51 mm) (22 to 24 AWG)
Insulation Size:	0.042 in (1.08 mm) (22 to 24 AWG) Maximum DOD
Insulation Types:	All plastic insulates (including PVC, irradiated PVC, Polyethylene, Polypropylene, PTF Polyurethane, Nylon, and FEP)
Insertion Life :	750 minimum insertions of an FCC 8-Position Telecommunications Plug
Front Panel:	Black powder painted steel.
Plastic:	High-impact, flame retardant, UL-rated 94V-0 thermoplastic



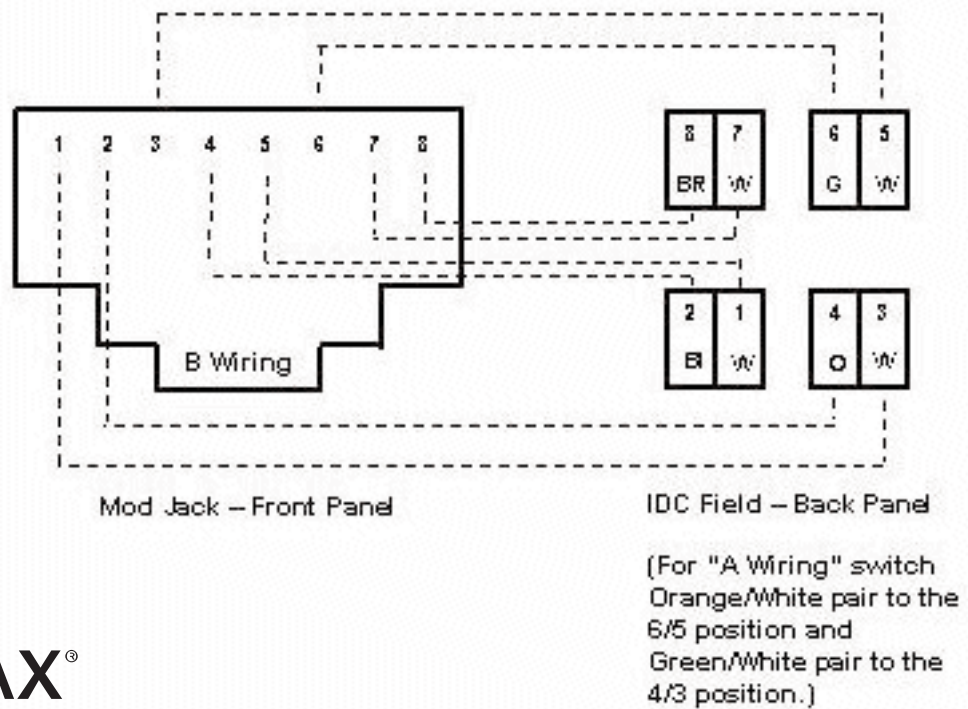
Rear view of 1100AGS3 Panel

## Ordering Information

Patch Panels	Pkg.	Material ID
1100GS3-24 Universal A/B Wiring	Each	700 173 750
1100GS3-48 Universal A/B Wiring	Each	700 173 768
1100AGS3-24 Angled Universal A/B Wiring	Each	760 026 757
1100AGS3-48 Angled Universal A/B Wiring	Each	760 026 765

Organizers & Wall Mount Adapters	Pkg.	Material ID
1100D1-35-19 Organizer	Each	106 830 615
1100D2-35-19 Organizer	Each	106 830 623
1100D3-35-19 Organizer	Each	107 132 664
1100C1-35-19 Wall mount	Each	106 830 573
1100C1-70-19 Wall mount	Each	106 830 581

TIA568 "B" Wiring Scheme



# SYSTIMAX<sup>®</sup> SOLUTIONS

© 2004 CommScope, Inc.  
All rights reserved.

Visit our Web site at [www.systemax.com](http://www.systemax.com) or contact your local SYSTIMAX Solutions representative or SYSTIMAX BusinessPartner for more information. SYSTIMAX Solutions is a trademark of CommScope. All trademarks identified by ® or ™ are registered trademarks or trademarks, respectively, of CommScope.

This document is for planning purposes only and is not intended to modify or supplement any specifications or warranties relating to SYSTIMAX Solutions products or services.

08/04 PR-B-7-1

Close up of the rear of a 6-port module showing the label and wiring configuration



[www.systemax.com](http://www.systemax.com)